

CUSTOMER TECHNICAL MEMO # 286

Subject ecoWALL 225 Manufacturing drawings for Structurally Glazed Mullions

Date: 16th February 2017

Author: Product Development Team

We are very pleased to advise we have prepared new manufacturing pages for the preparation of structurally glazed Mullions, along with Head and Transom preparations when using structurally glazed Mullions for ecoWALL 225 single and double glazed framing options.

Please find attached all new relevant pages to be replaced or added to your existing Tech Manuals. Please ensure your printer is set to double sided printing to assist in updating your Tech manuals.

ecoWALL 225 Flush Glazed Framing

Contents Page: Manufacturing Drawings - Text added

Page 1.0: Tech Manual Release notes updated

Page 3.6.20 to 3.6.29: Structural Mullion Manufacturing Drawings added

Should you have any questions please do not hesitate to contact your local Alspec Area Manager or Sales Office.



ALSPEC ALUMINIUM SYSTEMS

TECHNICAL MANUAL

ecoWALL 225 FLUSH GLAZED FRAMING

CONTENTS Continued

- 3.4.7 Typical jamb and split mullion details – Single glazed
- 3.4.8 Typical jamb and split mullion details – Structurally glazed
- 3.4.9 Typical 45mm door jamb detail

3.6 MANUFACTURING DRAWINGS

- 3.6.1 Typical jamb preparation
- 3.6.2 Typical jamb preparation for transoms
- 3.6.3 Typical mullion preparation
- 3.6.4 Typical mullion preparation for transoms
- 3.6.5 Typical mullion preparation
- 3.6.6 Typical mullion preparation for transoms
- 3.6.7 Face glazing bead preparation - Transoms
- 3.6.8 Transom drainage preparation
- 3.6.9 Typical jamb preparation – Internal glaze
- 3.6.10 Typical jamb preparation for transoms – Internal glaze
- 3.6.11 Typical male mullion preparation – Internal glaze
- 3.6.12 Typical male mullion preparation for transoms – Internal glaze
- 3.6.13 Typical female mullion preparation – Internal glaze
- 3.6.14 Typical female mullion preparation for transoms – Internal glaze
- 3.6.15 Transom drainage preparation – Internal glaze
- 3.6.16 Transom sealing detail
- 3.6.17 Sub head preparation and set out
- 3.6.18 Sub head and sub head bracket arrangement
- 3.6.19 Sub sill preparation
- 3.6.20 Typical S.G. structural male mullion preparation
- 3.6.21 Typical S.G. structural female mullion preparation
- 3.6.22 Frame preparation - Head with S.G. structural mullions
- 3.6.23 Typical transom preparation with S.G. structural mullions
- 3.6.24 Typical sill preparation with S.G. structural mullions
- 3.6.25 Typical D.G. structural male mullion preparation
- 3.6.26 Typical D.G. structural female mullion preparation
- 3.6.27 Frame preparation – Head with D.G. structural mullions
- 3.6.28 Typical transom preparation with D.G. structural mullions
- 3.6.29 Typical sill preparation with D.G. Structural mullions

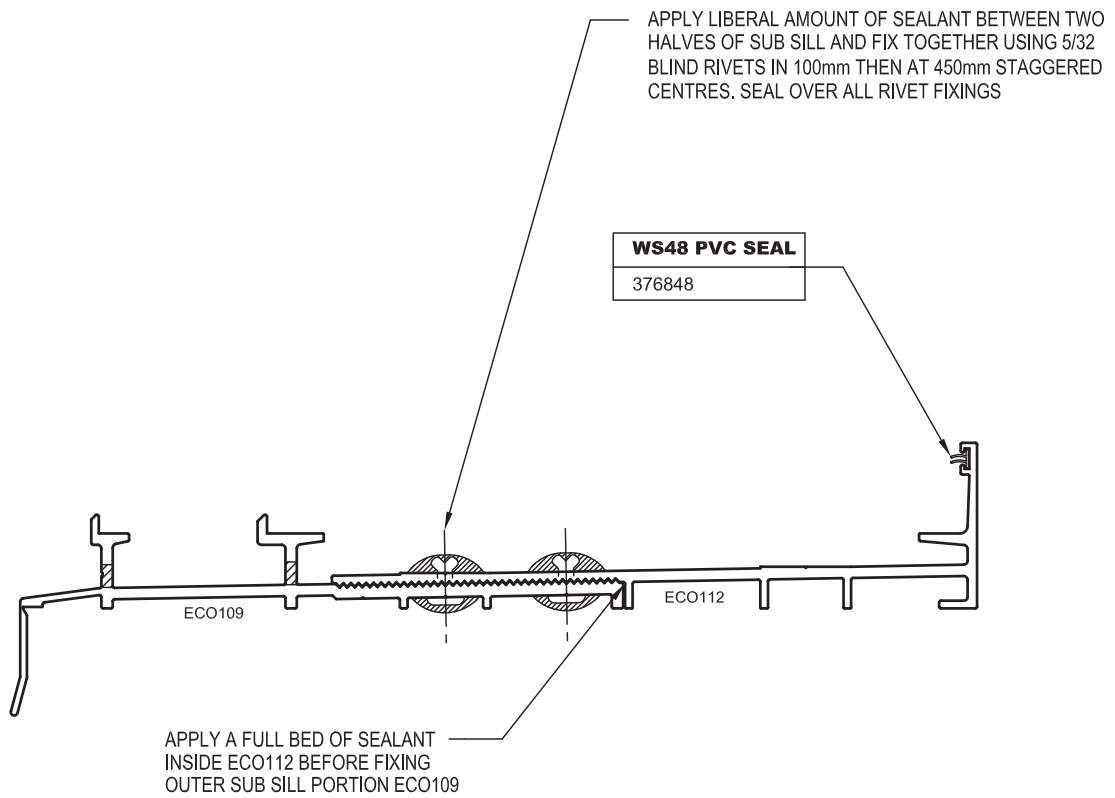
3.7 GLAZING DETAILS

- 3.7.1 Glazing details double glazed
- 3.7.2 Glazing details – with ECO115 glazing adaptor
- 3.7.3 Glazing details – with ECO114 glazing adaptor
- 3.7.4 Structural Glazing details – with ECO115 glazing adaptor

4.0 CARE AND MAINTENANCE

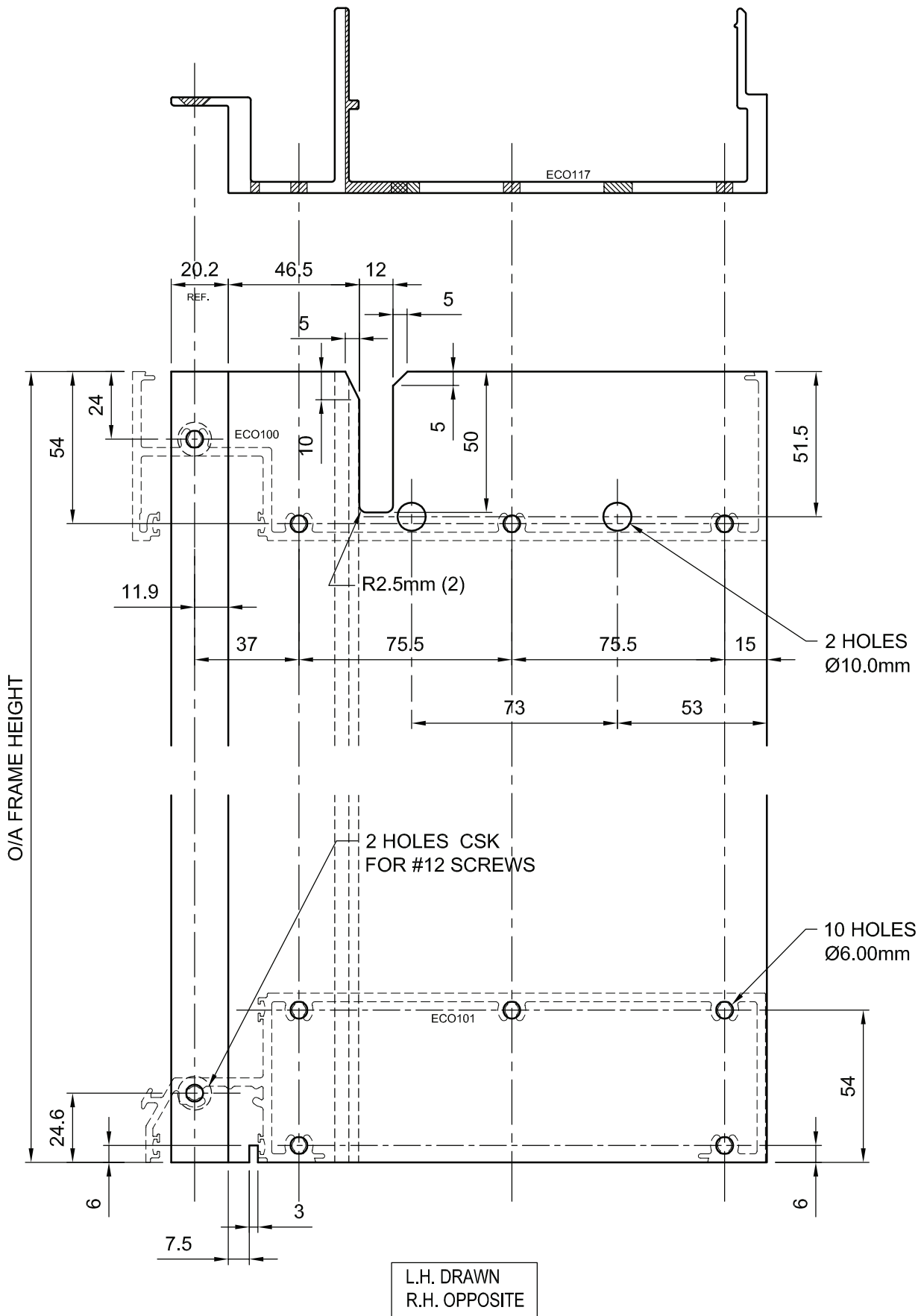
ecoWALL 225

SUB SILL PREPARATION

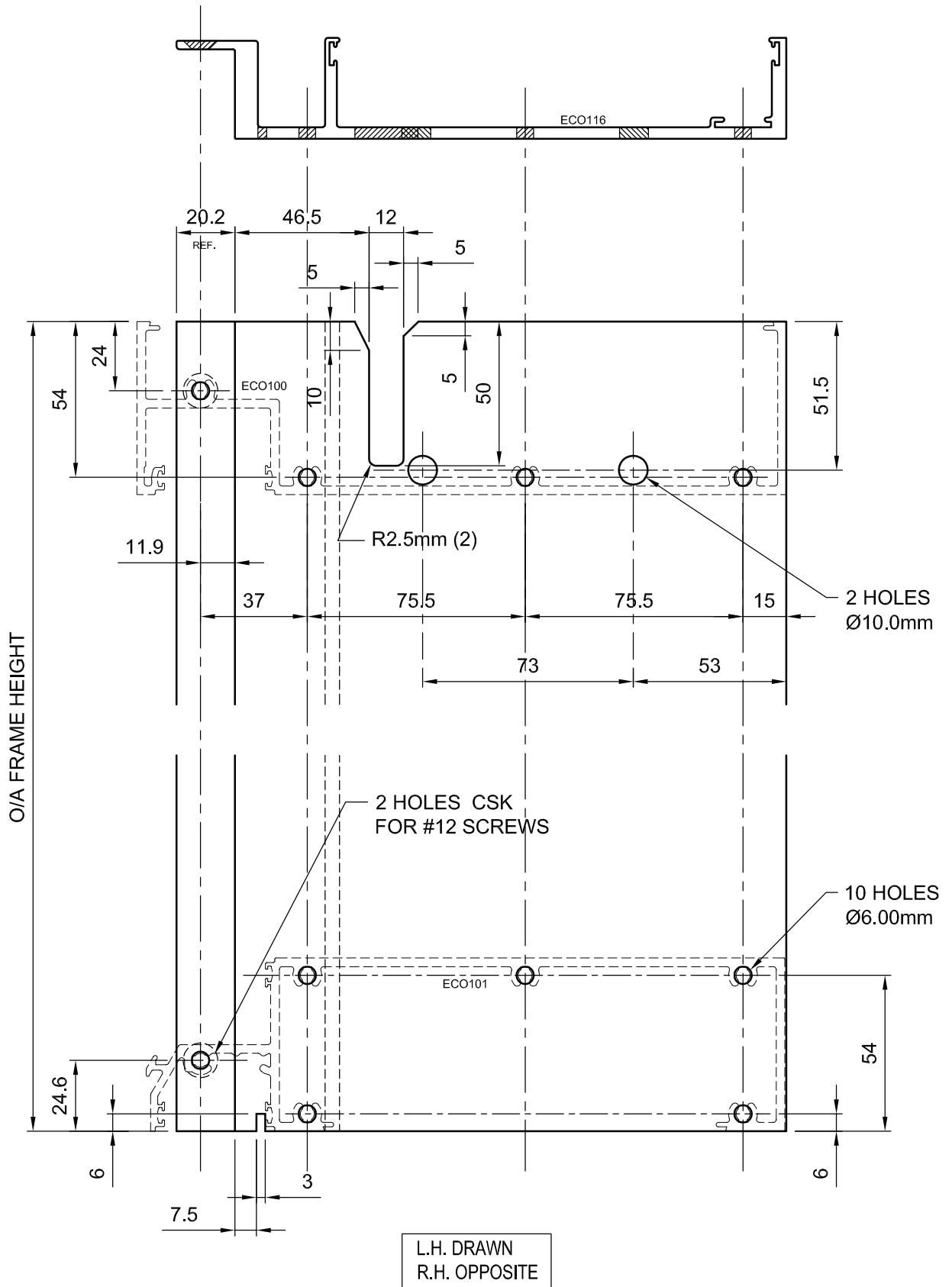


HALF SCALE

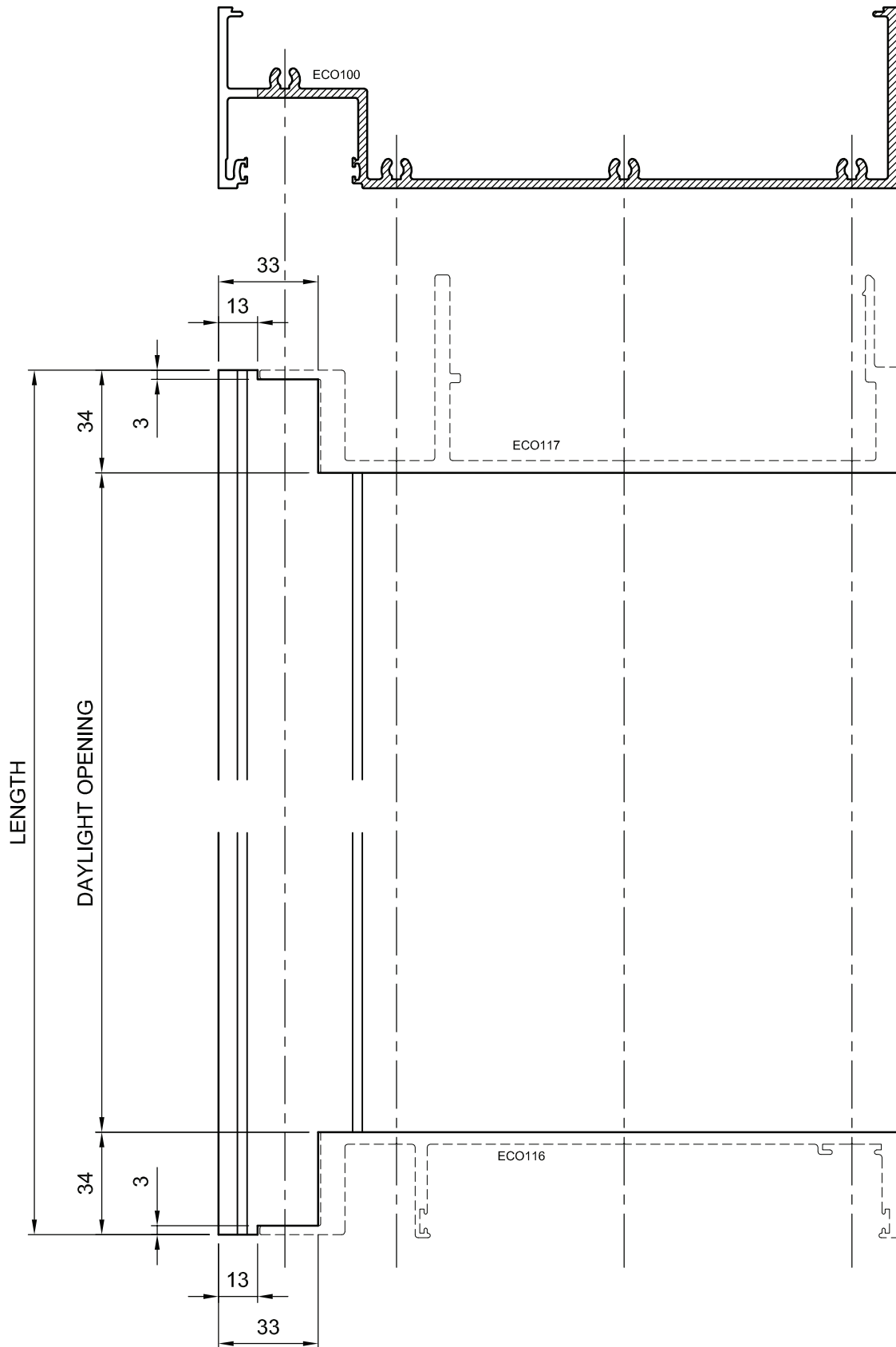
TYPICAL S.G. STRUCTURAL MALE MULLION PREPARATION



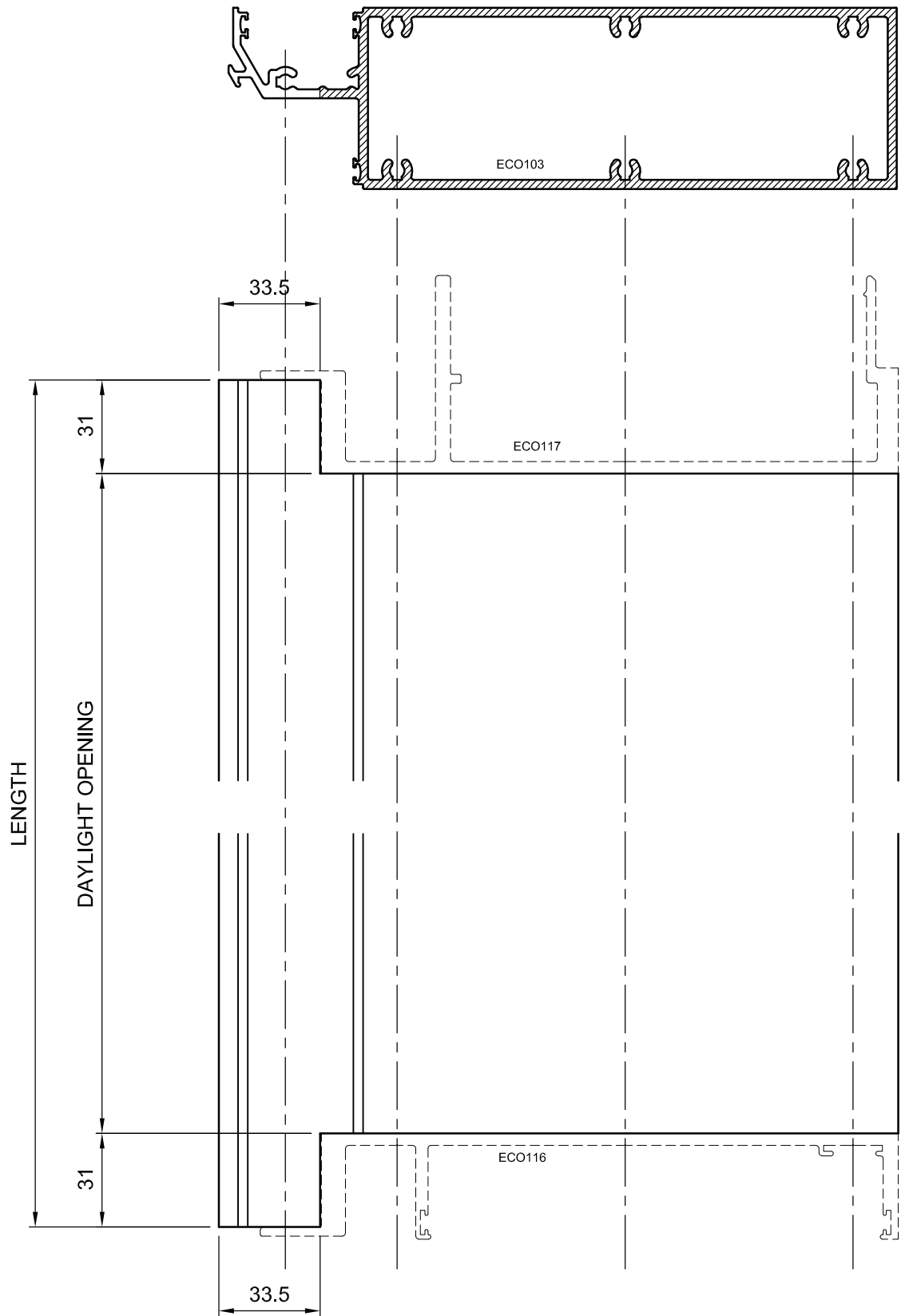
TYPICAL S.G. STRUCTURAL FEMALE MULLION PREPARATION



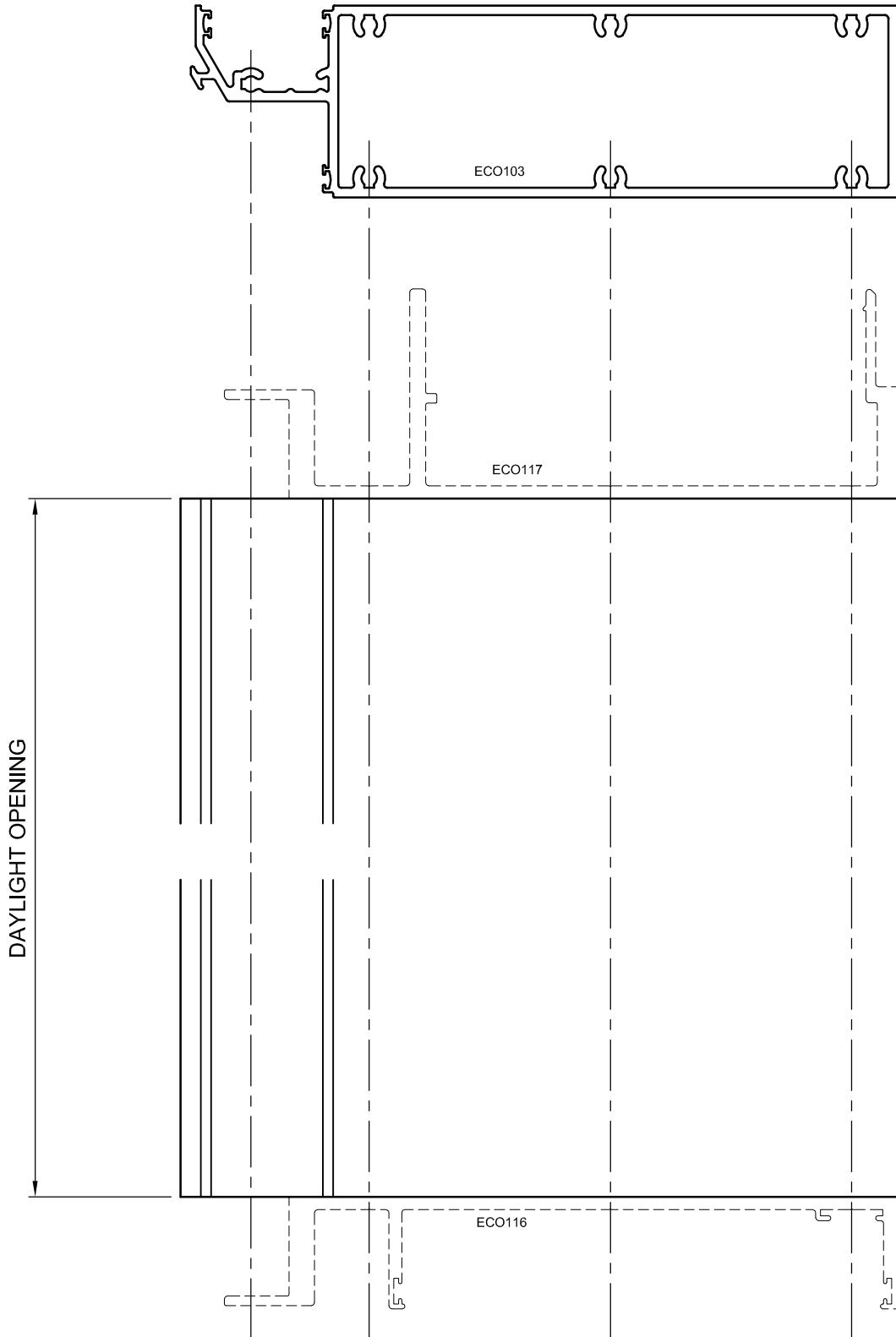
FRAME PREPARATION - HEAD WITH S.G. STRUCTURAL MULLIONS



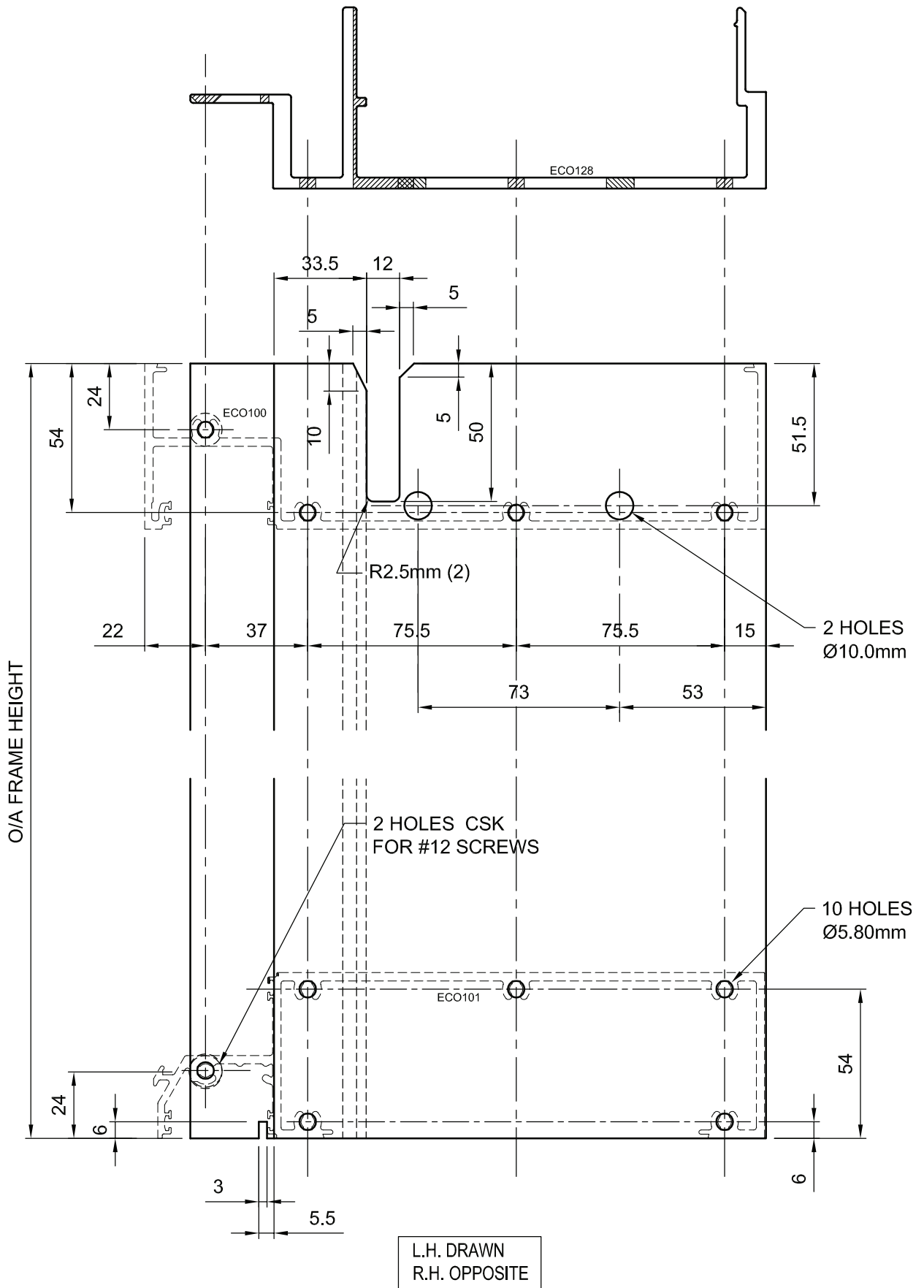
TYPICAL TRANSOM PREPARATION WITH S.G. STRUCTURAL MULLIONS



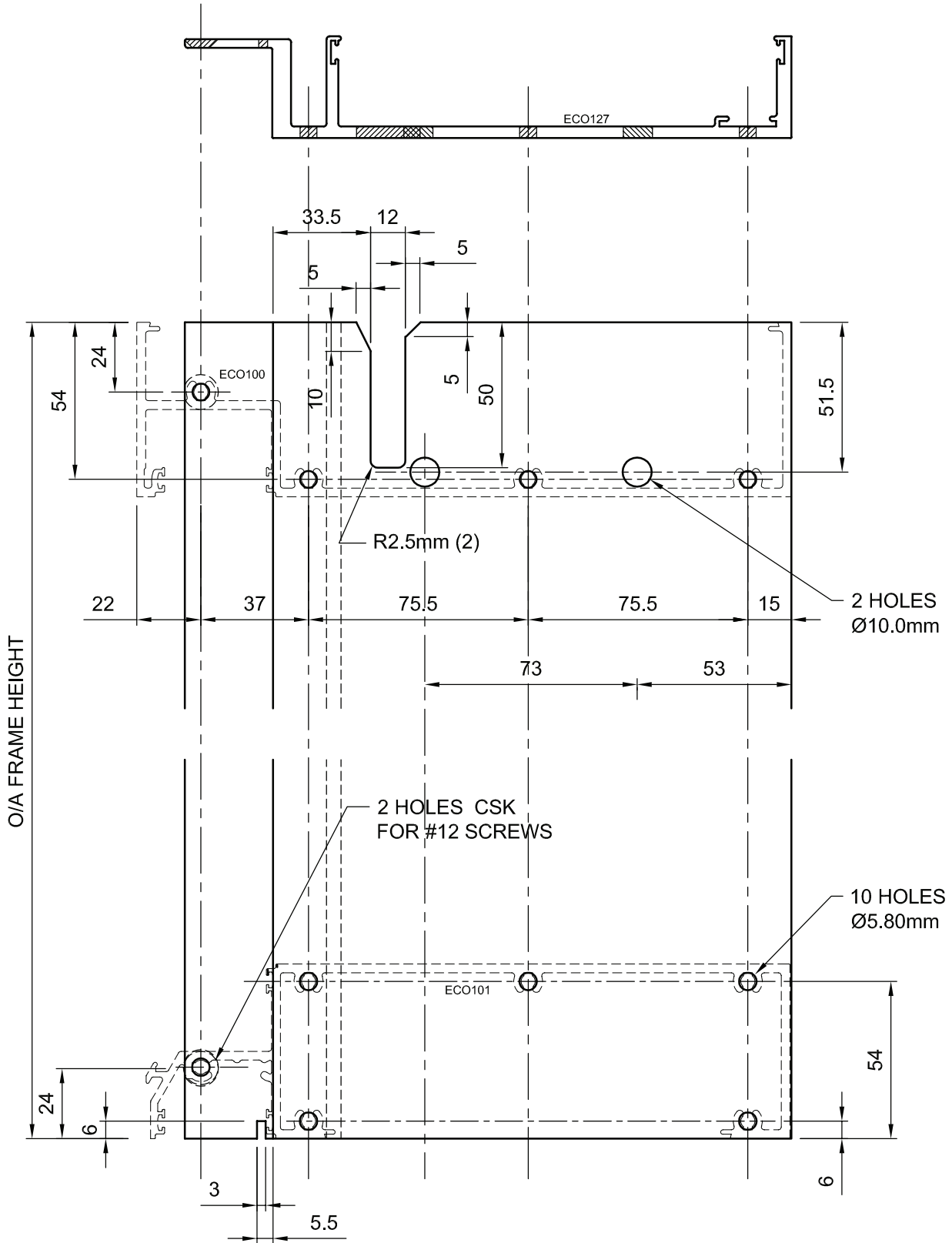
TYPICAL SILL PREPARATION WITH S.G. STRUCTURAL MULLIONS



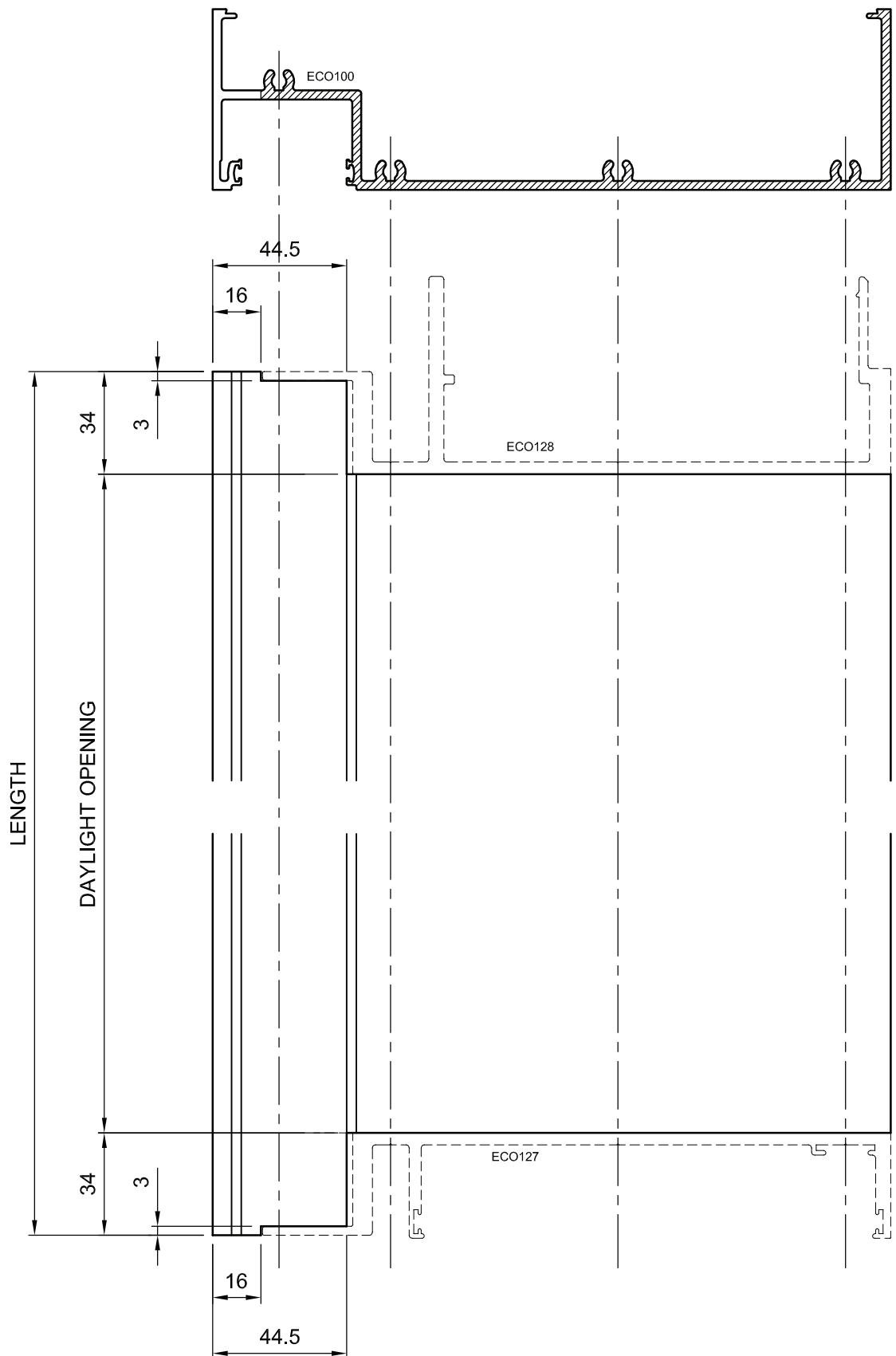
TYPICAL D.G. STRUCTURAL MALE MULLION PREPARATION



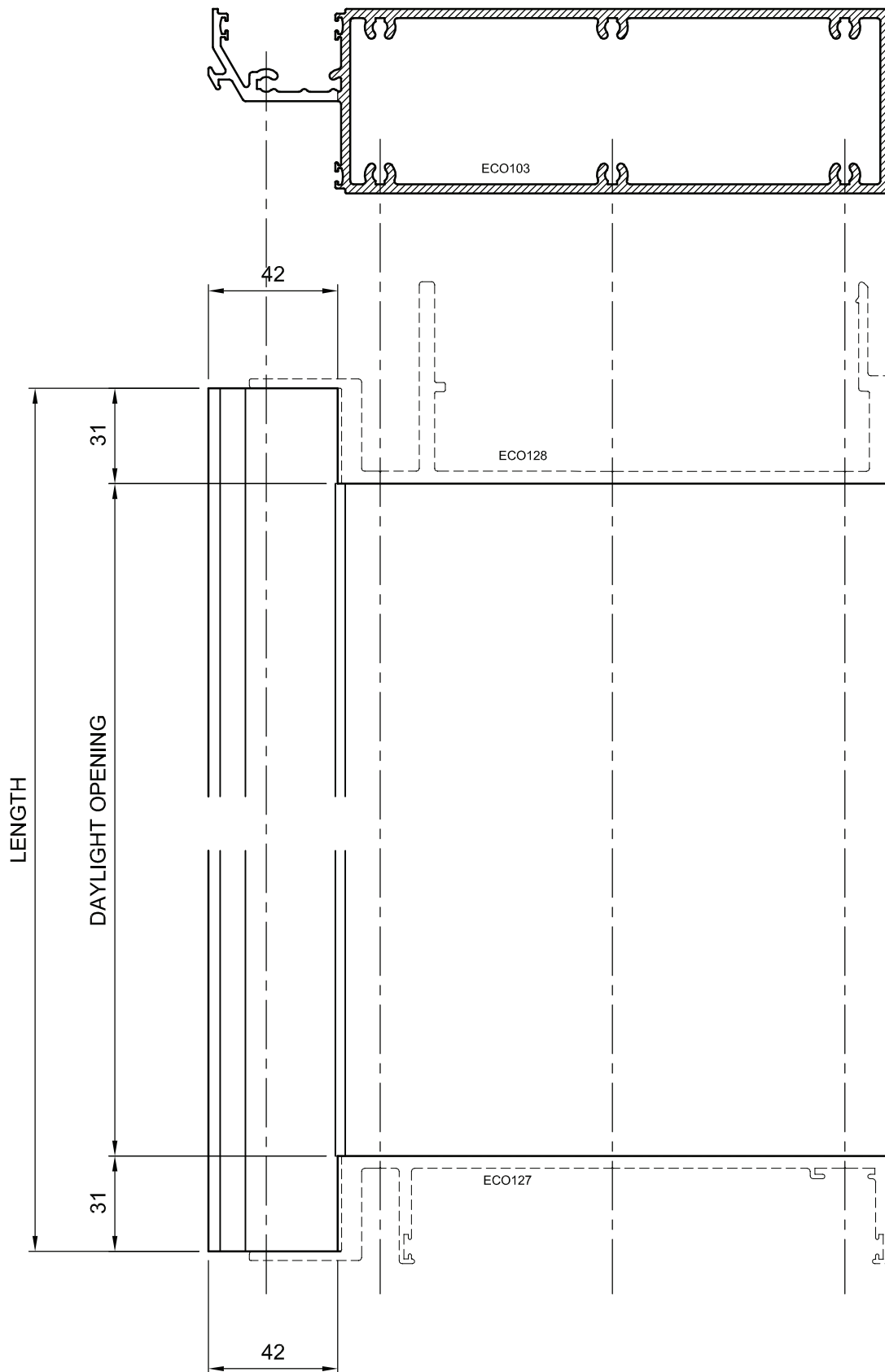
TYPICAL D.G. STRUCTURAL FEMALE MULLION PREPARATION



FRAME PREPARATION – HEAD WITH D.G. STRUCTURAL MULLIONS



TYPICAL TRANSOM PREPARATION WITH D.G. STRUCTURAL MULLIONS



TYPICAL SILL PREPARATION WITH D.G. STRUCTURAL MULLIONS

